

[TopPage](#)>>[Search Result](#)>>7230

Angular Contact Ball Bearings

Bearing No. : **NACHI 7230**

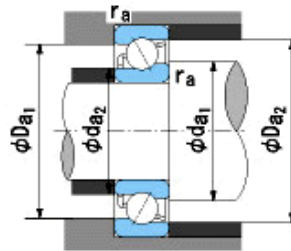
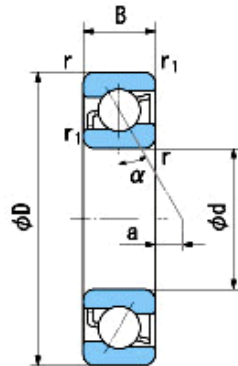
■ Bearing Type

■ Clearance

■ Tolerance Class

Dimensions

d = 150⁰_{-0.025}
 D = 270⁰_{-0.035}
 B = 45⁰_{-0.250}
 r = 3~5
 (Radial Direction)
 r = 3~8
 (Axial Direction)
 r1 = 1.1~2.5
 (Radial Direction)
 r1 = 1.1~4
 (Axial Direction)
 a = 38.1



Dimensions

da1(min) = 164
 da2(min) = 157
 Da1(max) = 256
 Da2(max) = 263
 ra(max) = 2.5
 ra1(max) = 1
 Mass = 11.0 kg

Basic Dynamic Load Rating Cr : **249,000** N

Basic Static Load Rating Cor : **280,000** N

Limiting Speed ;

Grease Lubrication : **2,000** min⁻¹

Oil Lubrication : **2,800** min⁻¹

O.D.Surface Runout with Side :

Axial Runout with Bore :

Axial Runout with Raceway :

Width Variation :

Radial Runout :

INNER RING

OUTER RING

-
 -
 -
0.030 **0.030**
0.030 **0.060**